

(KUNDEEP BANIK) JDA
 (S. SANKHETI) JDA
 (P. ARJUN) JDA
 (ASHWASTHI) JDA
 SENIOR TOWN PLANNER
 ADD. CHIEF TOWN PLANNER
 TOWN PLANNER
 TOWN PLANNER
 TOWN PLANNER

Scale :- 1:50,000

0 0.5 1 1.5 2 2.5 3 Kilometers

Key Map

Jaipur Development Authority

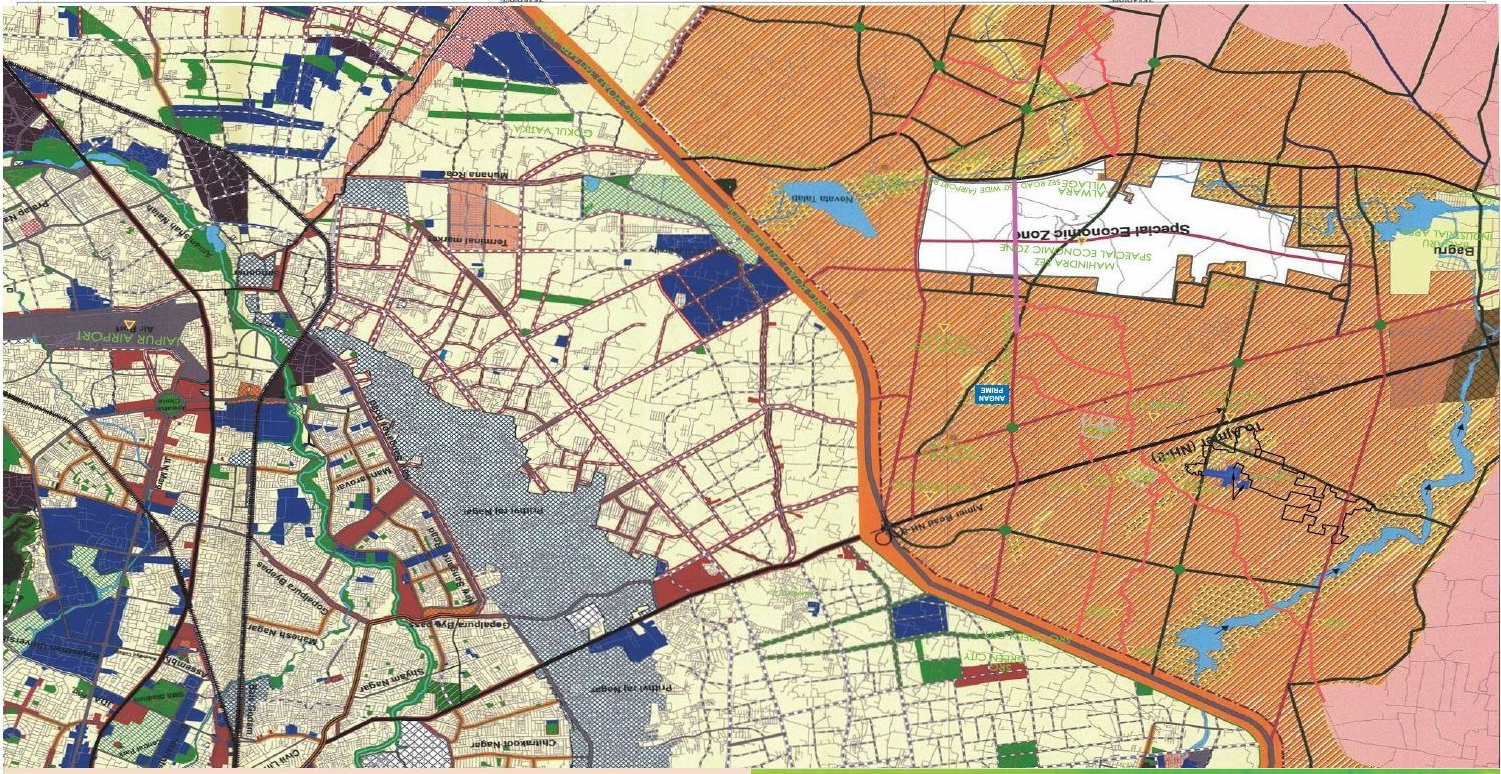
MASTER DEVELOPMENT PLAN - 2025

LANDUSE PLAN JAIPUR

Legend

PROPOSED USE

Residential (R) - R1, R2, R3, R4, R5, R6, R7, R8, R9, R10, R11, R12, R13, R14, R15, R16, R17, R18, R19, R20, R21, R22, R23, R24, R25, R26, R27, R28, R29, R30, R31, R32, R33, R34, R35, R36, R37, R38, R39, R40, R41, R42, R43, R44, R45, R46, R47, R48, R49, R50, R51, R52, R53, R54, R55, R56, R57, R58, R59, R60, R61, R62, R63, R64, R65, R66, R67, R68, R69, R70, R71, R72, R73, R74, R75, R76, R77, R78, R79, R80, R81, R82, R83, R84, R85, R86, R87, R88, R89, R90, R91, R92, R93, R94, R95, R96, R97, R98, R99, R100
 Commercial (C) - C1, C2, C3, C4, C5, C6, C7, C8, C9, C10, C11, C12, C13, C14, C15, C16, C17, C18, C19, C20, C21, C22, C23, C24, C25, C26, C27, C28, C29, C30, C31, C32, C33, C34, C35, C36, C37, C38, C39, C40, C41, C42, C43, C44, C45, C46, C47, C48, C49, C50, C51, C52, C53, C54, C55, C56, C57, C58, C59, C60, C61, C62, C63, C64, C65, C66, C67, C68, C69, C70, C71, C72, C73, C74, C75, C76, C77, C78, C79, C80, C81, C82, C83, C84, C85, C86, C87, C88, C89, C90, C91, C92, C93, C94, C95, C96, C97, C98, C99, C100
 Industrial (I) - I1, I2, I3, I4, I5, I6, I7, I8, I9, I10, I11, I12, I13, I14, I15, I16, I17, I18, I19, I20, I21, I22, I23, I24, I25, I26, I27, I28, I29, I30, I31, I32, I33, I34, I35, I36, I37, I38, I39, I40, I41, I42, I43, I44, I45, I46, I47, I48, I49, I50, I51, I52, I53, I54, I55, I56, I57, I58, I59, I60, I61, I62, I63, I64, I65, I66, I67, I68, I69, I70, I71, I72, I73, I74, I75, I76, I77, I78, I79, I80, I81, I82, I83, I84, I85, I86, I87, I88, I89, I90, I91, I92, I93, I94, I95, I96, I97, I98, I99, I100
 Institutional (IN) - IN1, IN2, IN3, IN4, IN5, IN6, IN7, IN8, IN9, IN10, IN11, IN12, IN13, IN14, IN15, IN16, IN17, IN18, IN19, IN20, IN21, IN22, IN23, IN24, IN25, IN26, IN27, IN28, IN29, IN30, IN31, IN32, IN33, IN34, IN35, IN36, IN37, IN38, IN39, IN40, IN41, IN42, IN43, IN44, IN45, IN46, IN47, IN48, IN49, IN50, IN51, IN52, IN53, IN54, IN55, IN56, IN57, IN58, IN59, IN60, IN61, IN62, IN63, IN64, IN65, IN66, IN67, IN68, IN69, IN70, IN71, IN72, IN73, IN74, IN75, IN76, IN77, IN78, IN79, IN80, IN81, IN82, IN83, IN84, IN85, IN86, IN87, IN88, IN89, IN90, IN91, IN92, IN93, IN94, IN95, IN96, IN97, IN98, IN99, IN100
 Open Space (OS) - OS1, OS2, OS3, OS4, OS5, OS6, OS7, OS8, OS9, OS10, OS11, OS12, OS13, OS14, OS15, OS16, OS17, OS18, OS19, OS20, OS21, OS22, OS23, OS24, OS25, OS26, OS27, OS28, OS29, OS30, OS31, OS32, OS33, OS34, OS35, OS36, OS37, OS38, OS39, OS40, OS41, OS42, OS43, OS44, OS45, OS46, OS47, OS48, OS49, OS50, OS51, OS52, OS53, OS54, OS55, OS56, OS57, OS58, OS59, OS60, OS61, OS62, OS63, OS64, OS65, OS66, OS67, OS68, OS69, OS70, OS71, OS72, OS73, OS74, OS75, OS76, OS77, OS78, OS79, OS80, OS81, OS82, OS83, OS84, OS85, OS86, OS87, OS88, OS89, OS90, OS91, OS92, OS93, OS94, OS95, OS96, OS97, OS98, OS99, OS100
 Water Bodies (WB) - WB1, WB2, WB3, WB4, WB5, WB6, WB7, WB8, WB9, WB10, WB11, WB12, WB13, WB14, WB15, WB16, WB17, WB18, WB19, WB20, WB21, WB22, WB23, WB24, WB25, WB26, WB27, WB28, WB29, WB30, WB31, WB32, WB33, WB34, WB35, WB36, WB37, WB38, WB39, WB40, WB41, WB42, WB43, WB44, WB45, WB46, WB47, WB48, WB49, WB50, WB51, WB52, WB53, WB54, WB55, WB56, WB57, WB58, WB59, WB60, WB61, WB62, WB63, WB64, WB65, WB66, WB67, WB68, WB69, WB70, WB71, WB72, WB73, WB74, WB75, WB76, WB77, WB78, WB79, WB80, WB81, WB82, WB83, WB84, WB85, WB86, WB87, WB88, WB89, WB90, WB91, WB92, WB93, WB94, WB95, WB96, WB97, WB98, WB99, WB100
 Other (O) - O1, O2, O3, O4, O5, O6, O7, O8, O9, O10, O11, O12, O13, O14, O15, O16, O17, O18, O19, O20, O21, O22, O23, O24, O25, O26, O27, O28, O29, O30, O31, O32, O33, O34, O35, O36, O37, O38, O39, O40, O41, O42, O43, O44, O45, O46, O47, O48, O49, O50, O51, O52, O53, O54, O55, O56, O57, O58, O59, O60, O61, O62, O63, O64, O65, O66, O67, O68, O69, O70, O71, O72, O73, O74, O75, O76, O77, O78, O79, O80, O81, O82, O83, O84, O85, O86, O87, O88, O89, O90, O91, O92, O93, O94, O95, O96, O97, O98, O99, O100



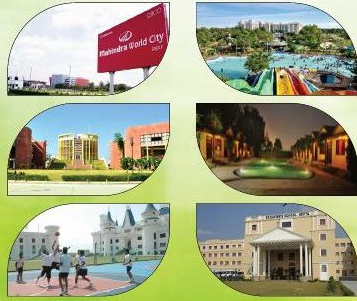
New Angan Prime is an premium residential township in plots and villas and It is surrounded with Posh living, Corporate culture, and Educational Institutions. Every feature here is customized to meet the finest of your needs. It is especially presented for the Finest Gentry neighbourhoods of Jaipur. A Life away from Pollution and a place which speaks who you are. It is situated at the heart line of jaipur-Main Mahapura Market, Ajmer Road, Jaipur A Project which is Away from jaipur ajmer bypass, 10min. Distance from vaishali nagar with an upcoming posh developing area of jaipur and where a new story of unprecedented development is about to begin.

PROJECT OVERVIEW

JDA APPROVED DAMAR ROADS TEMPLE YOGA AREA LANDSCAPED PARK STREET LIGHTS BADMINTON COURT OVERHEAD WATER TANK CCTV CAMERA

NEARBY ATTRACTION

- Kanchan Kesari
- Pink Pearl Water Park
- Near Mahendra SEZ
- St. Xavier School
- at Joining 1100 Villas
- Neeraja Modi School
- JK Laxmpati University
- Proposed 250 Companies
- STEP by STEP International School



Angan Prime New Grand City Prime

AT 200 Ft. SEZ ROAD, VILLAGE- MAHAPURA, JAIPUR

असंभव हुआ संभव

“सुनहरा अवसर”

अपने सपनों का प्लॉट

खरीदने का

मौका

जेडीए पट्टा व बेहतरीन

सुविधाओं के साथ



RUDRA GROUP

Plot No. S-2, 1st. Floor, Upon SBI Bank, Near Metro Pillar No. 44, New Aatish Market, Mansarovar, Jaipur [E-mail : info.rudragroups@gmail.com] www.rudrgroup.com
 Cont. : +91-9983859733

N.H.8 AJMER ROAD

N.H.8 AJMER ROAD

PROPOSED ROAD 200'-0" WIDE

PROPOSED ROAD 200'-0" WIDE



**Proposed
New Angan Prime**

TO AJMER ROAD

SECTOR ROAD 200'-0" WIDE (SEZ ROAD)

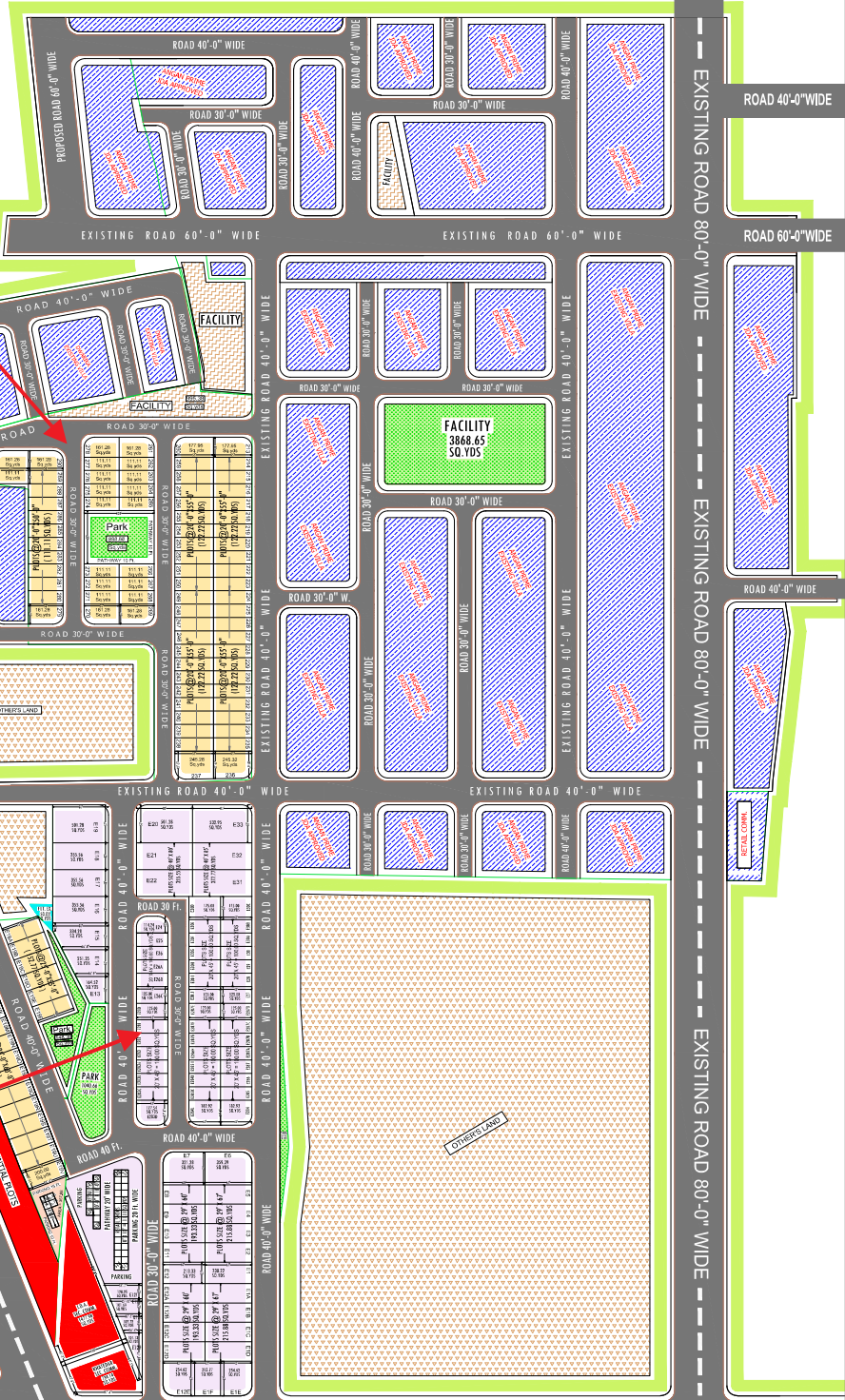
JDA CANAL & RESERVATION ROADS

JDA CANAL & RESERVATION ROADS

TO MAHINDRA SEZ



**Angan Prime
E-Block**



EXISTING ROAD 80'-0" WIDE

ROAD 40'-0" WIDE

ROAD 60'-0" WIDE

ROAD 40'-0" WIDE

EXISTING ROAD 80'-0" WIDE

EXISTING ROAD 80'-0" WIDE

PROPOSED ROAD 100'-0" WIDE

PROPOSED ROAD 100'-0" WIDE

PROPOSED ROAD 100'-0" WIDE